

# Bloomberg Basel III Regulatory Data

Regulatory & Accounting Product Team  
Bloomberg Enterprise Data

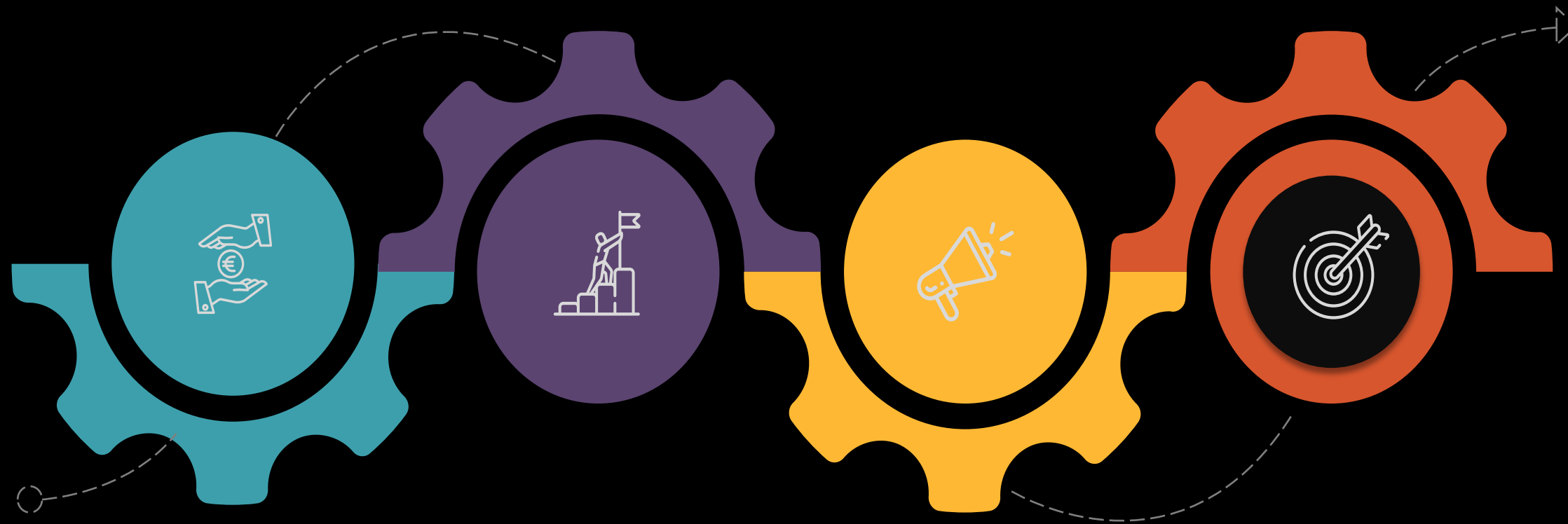
September 2024

# What is Regulatory Data ?



# Bloomberg Regulatory Product Development Process

Supported by a team of subject matter experts, Bloomberg combines high-quality data, ongoing enhancements, and best-in-class service to help clients streamline compliance workflow in an automated manner.



## Review Regulation Text

Review of the regulation text by members of our Regulatory Product specialist team, with outside input solicited where relevant or needed.

## Design Initial Product

Design initial product by identifying data points to perform the required tests in an automatic and systemic way

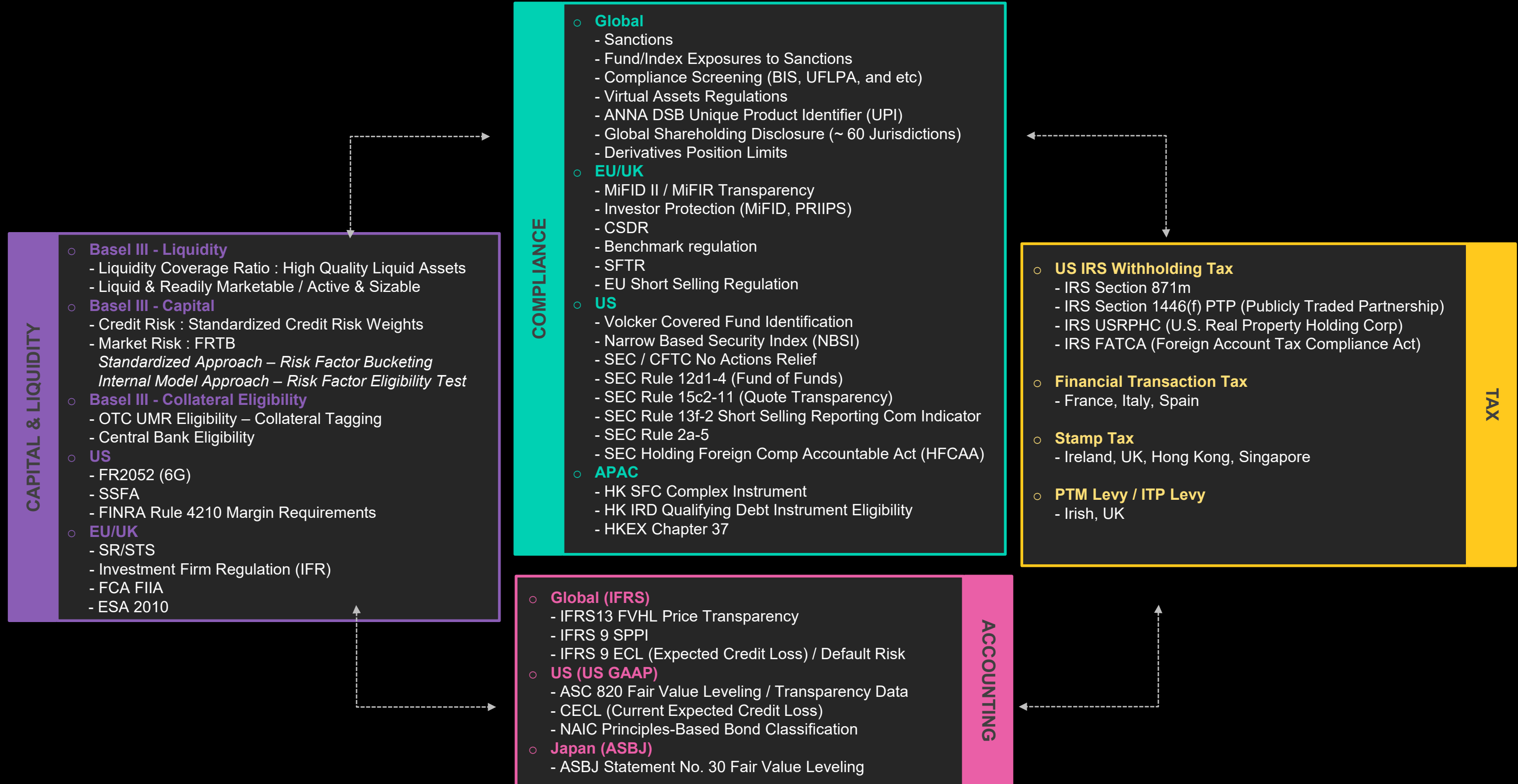
## Finalize development reflecting industry feedback

Solicitation of industry opinions, through unilateral conversations, or through roundtable events. Feedback & consensus are reflected in the final product

## Ongoing Maintenance /Enhancement

Ongoing engagement with clients, industry groups and regulators to understand areas of ambiguity and evolution of the regulation that requires changes/action to the existing product.

# Enterprise Regulatory Data Solutions



# Major Product Features

## Daily Rules-based Classification

- ❑ Deliver a daily product feed which reevaluates determinations daily based on the most recent available data
- ❑ Extensive database of security and collateral level data facilitates rule-based analysis
- ❑ Daily QC is performed by QA team



## Methodology Paper

- ❑ Detailed methodology documentation provided to subscribers of Bloomberg regulatory products.
- ❑ Regulatory team to research and provide resolution/explanation for questions regarding data integrity and methodology

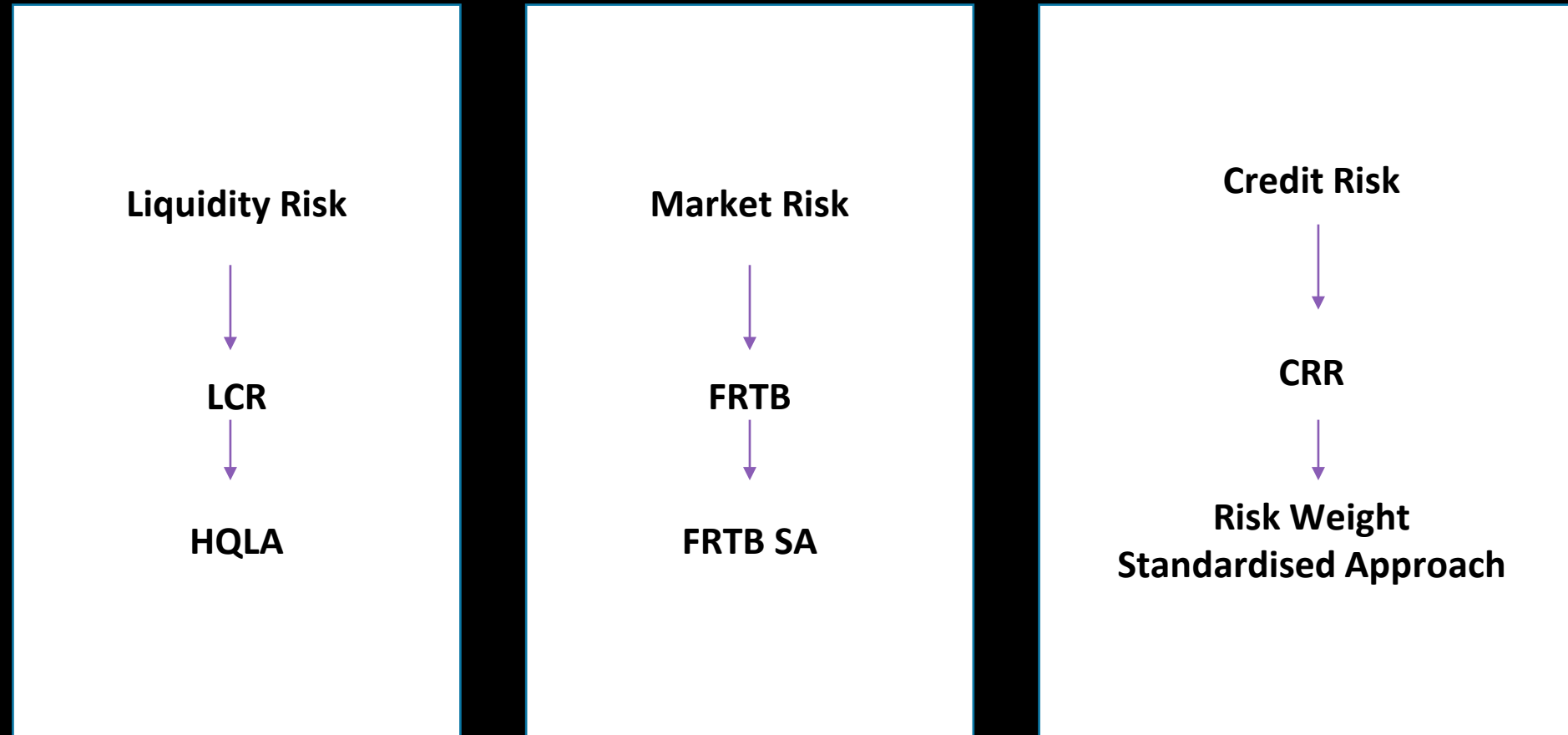
## Customer Support

- ❑ Access to the dedicated team of subject matter experts
- ❑ Clients can raise questions via web-based Customer Service Center.
- ❑ Product evolution/amendments are inherent in new regulations. Changes, and impacts on assets resulting from them, will be communicated with appropriate notice

## SOC2 Certified

- ❑ SOC 2 Certification for Suitability of the Design and operating Effectiveness of Controls.

# Basel III - Standards



# Basel III

## Liquidity Risk (LCR – HQLA )

### Covered Bond Examples

	Covered Bond Example 1	Covered Bond Example 2	Covered Bond Example 3
National Framework	Yes	Yes	No
Issue Size	500 MM €	250MM €	90 Bil ¥
Cover Pool Comp.	Residential	Shipping/Residential	Commercial/Public Loans
Over-Collateralisation	12%	10%	5%
LTV	40 %	59 % / 75 %	60 %
Rating	ECAI 1	ECAI 1	ECAI 2
Basel	2A	2A	NE
US	NE	NE	NE
EU	1	2A	NE
UK	2A	2A	NE

# Basel III

## Market Risk (FRTB – SA)

### Covered Bond Examples

	Covered Bond Example 1	Covered Bond Example 2	Covered Bond Example 3
National Framework	Yes	Yes	No
Issue Size	500 MM €	250MM €	90 Bil ¥
Cover Pool Comp.	Residential	Shipping/Residential	Commercial/Public Loans
Over-Collateralisation	12%	10%	5%
LTV	40 %	59 % / 75 %	60 %
Rating	ECAI 1	ECAI 1	ECAI 2
Basel	8 / 0.5 / 2.5	3 / 2 / 5	3 / 3 / 5
US	8 / 2.1 / 2.5	3 / 4.1 / 5	3 / 4.1 / 5
EU	9 / 0.5 / 1	4 / 0.5 / 5	4 / 3 / 5
UK	8 / 0.5 / 1.5	3 / 2 / 5	3 / 3 / 5

'Bucket' / 'Default Risk Weight' / 'Risk Weight'  
SBM - Delta CSR – Default Capital Requirement



# Basel III

## Credit Risk Weight Standardised Approach (CRR)

### Covered Bond Examples

	Covered Bond Example 1	Covered Bond Example 2	Covered Bond Example 3
National Framework	Yes	Yes	No
Issue Size	500 MM €	250MM €	90 Bil ¥
Cover Pool Comp.	Residential	Shipping/Residential	Commercial/Public Loans
Over-Collateralisation	12%	10%	5%
LTV	40 %	59 % / 75 %	60 %
Rating	ECAI 1	ECAI 1	ECAI 2
Basel	10 %	10 %	20 %
US	20 %	20 %	20%
EU	10 %	10 %	20 %
UK	10 %	10 %	20 %

# Disclaimer

---

The data and information included in these materials are for illustrative and discussion purposes only. The BLOOMBERG TERMINAL service and Bloomberg data products (the “Services”) are owned and distributed by Bloomberg Finance L.P. (“BFLP”) except (i) in Argentina, Australia and certain jurisdictions in the Pacific islands, Bermuda, China, India, Japan, Korea and New Zealand, where Bloomberg L.P. and its subsidiaries (“BLP”) distribute these products, and (ii) in Singapore and the jurisdictions serviced by Bloomberg’s Singapore office, where a subsidiary of BFLP distributes these products. BLP provides BFLP and its subsidiaries with global marketing and operational support and service. Certain features, functions, products and services are available only to sophisticated investors and only where permitted. BFLP, BLP and their affiliates do not guarantee the accuracy of prices or other information in the Services. Nothing in the Services shall constitute or be construed as an offering of financial instruments by BFLP, BLP or their affiliates, or as investment advice or recommendations by BFLP, BLP or their affiliates of an investment strategy or whether or not to “buy”, “sell” or “hold” an investment. Information available via the Services should not be considered as information sufficient upon which to base an investment decision. The following are trademarks and service marks of BFLP, a Delaware limited partnership, or its subsidiaries: BLOOMBERG, BLOOMBERG ANYWHERE, BLOOMBERG MARKETS, BLOOMBERG NEWS, BLOOMBERG PROFESSIONAL, BLOOMBERG TERMINAL and BLOOMBERG.COM. Absence of any trademark or service mark from this list does not waive Bloomberg’s intellectual property rights in that name, mark or logo. All rights reserved. © 2020 Bloomberg.